

COLYAR CONSULTING GROUP, INC.

---

Texas Unified Nutrition Programs System (TX-UNPS)

# **School Nutrition Programs User Manual**

**Texas Department of Agriculture  
Food and Nutrition Division**

*For External Users*

## **TABLE OF CONTENTS**

---

<b>INTRODUCTION</b> .....	<b>1</b>
WEB SITE BENEFITS AND FEATURES .....	1
USER MANUAL.....	1
<b>GETTING STARTED</b> .....	<b>3</b>
ACCESSING THE WEB SITE .....	3
ABOUT THE TX-UNPS HOME PAGE.....	4
LOGGING ON .....	5
TX-UNPS CONTENT OVERVIEW.....	6
TX-UNPS PROGRAMS PAGE .....	9
SCHOOL NUTRITION PROGRAMS HOME PAGE .....	11
ERROR PROCESSING .....	13
Input Edits.....	13
Business Rule Edits .....	13
SELECTING A SCHOOL YEAR .....	15
CONTRACTING ENTITY SEARCH .....	16
<b>APPLICATIONS</b> .....	<b>17</b>
ABOUT THE SCHOOL YEAR ENROLLMENT PROCESS.....	17
SUBMITTING AN APPLICATION PACKET.....	18
APPLICATIONS MENU .....	19
Application Packet .....	20
Contracting Entity Application .....	21
Site Applications – School Nutrition Program.....	25
Checklist.....	37
Verification Report .....	41
Food Safety Inspections .....	43

---

Summer Nutrition Program Costs.....	45
Capital Expenditure Request.....	47
Texas Summer Mandate .....	49
Direct Certification/Direct Verification .....	51
Download Forms.....	52
<b>CLAIMS.....</b>	<b>53</b>
ABOUT THE CLAIMS PROCESS .....	53
CLAIMS MENU.....	54
CLAIM DATES.....	54
Claim Entry.....	55
Claim Year Summary.....	56
Claim Month Details .....	57
Claim Site List .....	57
Payment Summary .....	66
<b>SECURITY .....</b>	<b>68</b>
SECURITY MENU .....	68
<b>APPLICATION PACKET PROCESS.....</b>	<b>69</b>
SUBMITTING AN APPLICATION PACKET.....	69
APPLICATION PACKET STATUSES .....	71
APPLICATION STATUSES.....	73
CLAIM STATUSES .....	75

---

## **TABLE OF FIGURES**

---

Figure 1: TX-UNPS Home Page .....	3
Figure 2: TX-UNPS Content Overview .....	6
Figure 3: Screen Options - example .....	8
Figure 4: TX-UNPS Programs Page.....	9
Figure 5: School Nutrition Programs Home Page .....	11
Figure 6: Examples of an Input Error (Partial Screen) .....	13
Figure 7: Example of a Business Rule Error (Partial Screen) .....	14
Figure 8: Example of a Warning Error .....	14
Figure 9: Year Select screen.....	15
Figure 10: Contracting Entity Search screen .....	16
Figure 11: Enrolling in a New Program Year.....	17
Figure 12: Packet History (sub-section of the Application Packet screen).....	18
Figure 13: Applications Menu screen (State view) .....	19
Figure 14: Application Packet screen.....	21
Figure 15: Application Packet – SNP Site List screen .....	25
Figure 16: ‘Quick’ Site Profile screen.....	26
Figure 17: Application Packet – Seamless Summer Option Site List screen .....	29
Figure 18: ‘Quick’ Site Profile screen.....	30
Figure 19: Food Service Management Company Contracts list screen .....	33
Figure 20: Food Service Management Company Contracts screen (partial) - Termination .....	36
Figure 21: Food Service Management Company Contracts screen (partial) - Cancellation.....	36
Figure 22: Checklist Summary screen.....	37
Figure 23: Checklist screen .....	38
Figure 24: Checklist File Upload Detail screen.....	39
Figure 25: Application Packet screen – Fresh Fruit and Vegetable Program Application option .....	40

Figure 26: Direct Certification / Direct Verification screen .....	51
Figure 27: Download Forms screen.....	52
Figure 28: Claims Menu .....	54
Figure 29: Claim Year Summary screen .....	56
Figure 30: Claim Month Details Screen – Example of Processed Claims.....	57
Figure 31: Claim Month Details Screen – Example of Non-Processed Claims .....	57
Figure 32: Claim Site List screen .....	58
Figure 33: Claim Month Details screen – Add Original Claim .....	59
Figure 34: Claim Month Details screen – Modify an Un-processed Claim.....	60
Figure 35: Claim Month Details screen – Add Revision.....	62
Figure 36: Claim for Reimbursement Summary screen .....	64
Figure 37: Claim Rates for SNP screen.....	65
Figure 38: Payment Summary List screen.....	66
Figure 39: Payment Summary screen .....	67
Figure 40: Change Password screen.....	68

## Document Revision History

Version	Status	Date	Change Description	Updated By
V1.0	FINAL	03/13/2011	Final User Guide for Phase 1 Implementation	Simona Handley/ Meredith Noel
V1.1	FINAL	11/11/2011	Changes to home page links	Meredith Noel



# **Introduction**

*Welcome to the Texas Unified Nutrition Programs System (TX-UNPS) user manual for the School Nutrition Programs module. TX-UNPS is a web-based software solution that provides administrators, state users, and Contracting Entities with efficient and immediate access to applications, claims, and related nutrition program functions.*

## **Web Site Benefits and Features**

TX-UNPS is a user-friendly web application that allows authorized state agency personnel, Contracting Entities, and Education Service Centers (ESC) to submit and approve application, claims, and miscellaneous forms via the Internet. Key system features include:

- A software system that manages information regarding Contracting Entities, applications, claims, and reports.
- A single integrated database which serves all child nutrition programs.
- The ability to save partially completed forms on-line, allowing the user to complete the process at a later time.
- Individual User IDs and passwords for secure login to program functions and accurate tracking of user behavior.
- A robust security module that streamlines security setting controls by enabling administrators to easily assign users to numerous pre-defined groups and eliminating the need to manually set each user's security access.

## **User Manual**

This user manual is intended for use by authorized Contracting Entity (CE) and ESC users that administer the School Nutrition Programs. It is designed to provide a general understanding of how to use the system in an effective and efficient manner. This manual will provide:

- A general explanation of each feature available.

- Screen examples of web site pages and forms.
- Step-by-step instructions for utilizing the web site features.
- Tips and notes to enhance your understanding of the system.

# 2

## Getting Started

Before you can begin using TX-UNPS administrative modules, you must be assigned a user ID and password by the TX-UNPS Help Desk that provides the required security rights. Once this setup is complete, you may use the Internet and your assigned user ID and password to access and log onto the TX-UNPS web site.

### Accessing the Web Site

You can access TX-UNPS from any computer connected to the Internet by opening your Internet browser and entering the following URL in the browser's address line: <https://txunps.texasagriculture.gov/> The TX-UNPS project page displays. Click the "Continue to TX-UNPS logon page" link to log into TX-UNPS.



**TIP:** You can add this URL to your browser's FAVORITES list or create a shortcut to the web site on your desktop for quicker access to the site. Refer to your browser or operating system help files for further information.

**Nutrition Programs** TX-UNPS

**Returning Users: Log On**

User ID:

Password:

**Log On**

**Links**

- Need Help?
- Interested in Applying?
- TX-UNPS Project Website

**Welcome to the Texas Unified Nutrition Programs System!**  
Last Updated: 10/13/2011

If you are currently operating a Child and Adult Care Food Program or a School Nutrition Program and would like to request access to TX-UNPS, or have questions about TX-UNPS, please contact us at:  
(877) TEX-MEAL or squaremeals@TexasAgriculture.gov

**New Users of TX-UNPS**

- CACFP users that were active in SNAPs will receive logon information via email on September 6, 2011. To log on to TX-UNPS, enter your logon information into the User ID and Password fields and click the "Log On" button. Please be advised that the term "Logon ID" is the same as "User ID". Note: Your organization's CE ID (Contracting Entity ID) is not associated with your logon information and should not be entered here.
- If you need access to TX-UNPS and were not a user of SNAPs, please complete and submit a Certificate of Authority, form FND-101. This form is available through the "TX-UNPS Project Website" link. New users will receive logon information via email within 5 business days.

Figure 1: TX-UNPS Home Page

## ***About the TX-UNPS Home Page***

The TX-UNPS Home Page consists of three major sections:

- Bulletin Board.
- Log on.
- Links.

The bulletin board is managed by TDA and provides general information. It is important to remember that the bulletin board on the home page is viewable by the public.

The log on section is where authorized users enter their User ID and password. The links section provides access to websites and additional information:

- Selecting the **Need Help?** link will transfer the user to a webpage that contains the TX-UNPS User Manuals and other program resources (ex. Administrator's Reference Manual and Handbooks). The user can also send a support request or request a User ID and password.
- Selecting the **Interested in Applying?** link will transfer the user to a webpage that provides additional information on the nutrition programs offered and allow the user to submit a request for an application.
- Selecting the **TX-UNPS Project Website** link will transfer the user to the project's website.

# Logging On

## To log on

---

1. Access TX-UNPS by typing the URL into the address line of your web browser.
2. Enter your assigned **User ID**.
3. Enter your **Password**.
4. Select **Log On**.

**Note:** If you do not have a User ID and Password, contact the TX-UNPS Help Desk.



**TIP:** The Password is case-sensitive, so be sure to use upper and lower-case letters, if necessary.

## To change your password

---

If this is your first time logging on, the system will automatically require you to change your password.

1. Select a new password and enter it into the box provided.
2. Re-enter your new password for confirmation.
3. Select **Save** to continue to the TX-UNPS Programs page.

**Note:** Security configuration settings require a password ten (10) to twelve (12) characters in length. Please note that the password must be at least ten (10) characters in length. The password must contain at least one number, one letter, and one special character (e.g., !, ?, /). Passwords are case sensitive.

## TX-UNPS Content Overview

Once you are logged in and have selected a Contracting Entity, the top portion of the TX-UNPS application contains key elements that provide basic information about your location within the system and the selected Contracting Entity.

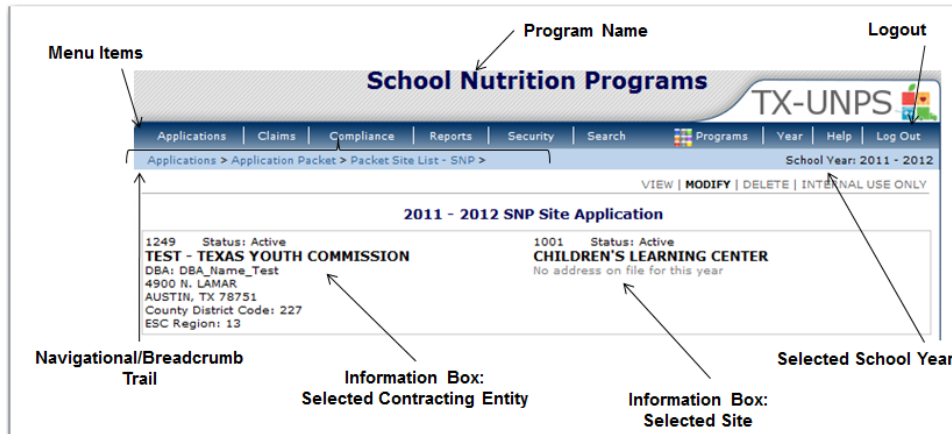


Figure 2: TX-UNPS Content Overview

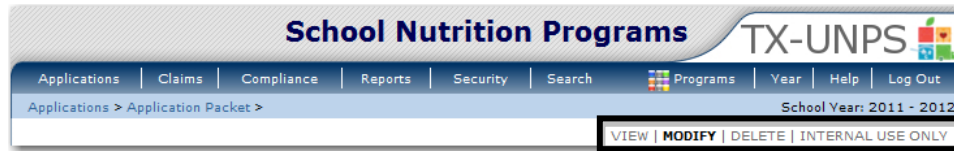
Item	Description
<b>Program Name</b>	The selected program name appears in the gray area at the top of the page.
<b>Menu Items</b>	Menu items display on the blue menu bar at the top of the page. Selecting a menu item will take you to its menu page.  Users may not have access to all menu items. If you are unable to select a particular menu item, you do not have the necessary security rights. Contact the TX-UNPS Help Desk for assistance.
<b>Navigation/Breadcrumb Trail</b>	The navigation, or breadcrumb trail, identifies your location within the web site. Selecting a specific portion of the trail will take you back to that particular screen.
<b>School Year</b>	The selected school year displays on the right beneath the menu bar. Upon logging in, the system defaults to the most current active school year.
<b>Information Box</b>	The information box displays general information regarding the Contracting Entity/Site.

Item	Description
<b>Logout</b>	The logout button displays in the menu bar. It is recommended to select <b>Logout</b> to properly exit the system.

**Note:** For security reasons, the system will automatically log you out after twenty (20) minutes of inactivity.

## **Screen Options**

Data entry screens in the system offer the user some or all of the following options: **VIEW**, **MODIFY**, **DELETE**, and **INTERNAL USE ONLY**. The Screen Options area is located on the top right side of the screen, directly beneath the colored bar.



**Figure 3: Screen Options - example**

The following table describes each of the possible screen options:

<b>Item</b>	<b>Description</b>
<b>VIEW</b>	Presents the screen information in 'view-only' mode. In this mode, the user cannot modify any data.
<b>MODIFY</b>	Presents the screen in 'modify' mode. In this mode, the user can modify field data and save the data after pressing the save button at the bottom of the screen.
<b>DELETE</b>	Deletes the current record displayed on the screen. The user will be presented with a confirmation screen to validate that they intend to delete the record.
<b>INTERNAL USE ONLY</b>	This option is only available to authorized State users only. This is available for screens that have an Internal Use Only section, which is typically at the bottom portion of the screen. Selecting this option will result in the fields in the Internal Use Only section to become editable.

## TX-UNPS Programs Page

Once you successfully log on, the TX-UNPS Programs page is displayed. Actual access to specific modules is based on the user's security rights.



**TIP:** The Accounting, Maintenance and Configuration, and Security tiles are always gray because these are administrative modules that are available to only authorized State users. Contracting Entities and ESCs will not have access to these modules. Only select authorized State users will have access to these modules.



Figure 4: TX-UNPS Programs Page

Selecting this button...	Provides...
<b>School Nutrition Programs</b>	Access to the School Nutrition Programs home page
<b>Accounting</b>	Access to the Accounting Module home page
<b>Child and Adult Care Food Program</b>	Access to the Child and Adult Care Food Program home page
<b>Maintenance and Configuration</b>	Access to the Maintenance and Configuration module home page
<b>Summer Food Service Program</b>	Access to the Summer Food Service Program home page
<b>Security</b>	Access to the Security Module home page

<b>Selecting this button...</b>	<b>Provides...</b>
<b>Food Distribution Program</b>	Access to the Food Distribution Program home page

## School Nutrition Programs Home Page

The School Nutrition Programs home page contains the message board used by state administrators to post and maintain School Nutrition Programs-related messages. Messages may contain important news regarding the submission due dates, upcoming training, legislative changes, or any other SNP-specific information.

### To access the School Nutrition Programs home page

---

1. Log on to the TX-UNPS web site.
2. On the Programs screen, select **School Nutrition Programs**.

**Note:** If a user only has access to the School Nutrition Programs module, the Programs screen is not displayed

3. The School Nutrition Programs home page displays.

**Note:** State administrators maintain the message boards for all TX-UNPS modules. If you would like a message posted on the School Nutrition Programs home page, please contact the TX-UNPS Help Desk. Please note that messages are visible to both internal and external users.

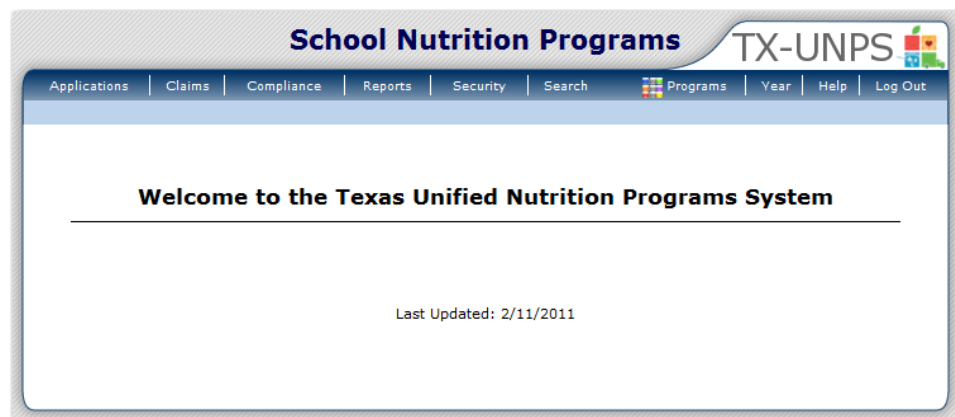


Figure 5: School Nutrition Programs Home Page

## School Nutrition Programs menu options

---

From the School Nutrition Programs home page, you can select a menu item from the blue menu bar at the top of the page. The School Nutrition Programs menu bar contains menu items specific to the School Nutrition Programs. The table below describes the features available for each menu option, which the remainder of this manual will discuss in detail.

Please note: individual users may have varying menu options due to the user's security configuration.

<b>Menu Item</b>	<b>Menu Features</b>
<b>Applications</b>	Access to overall application-related items including: <ul style="list-style-type: none"><li>▪ Contracting Entity Manager (State users only).</li><li>▪ Application Packet (inc. Contracting Entity, SNP, SSO, and FFVP applications).</li><li>▪ Verification Reports.</li><li>▪ Food Safety Inspection Reports.</li><li>▪ Fresh Fruit and Vegetable Invitations and Grants.</li><li>▪ Summer Nutrition Program Costs.</li><li>▪ October Enrollment.</li><li>▪ Capital Expenditure Requests.</li><li>▪ Texas Summer Mandate.</li><li>▪ Direct Certification/Direct Verification.</li><li>▪ Download Forms.</li></ul>
<b>Claims</b>	Access to claim entry screens (e.g., SNP, SSO, and FFVP) and Contracting Entity-specific payment history.
<b>Security</b>	Access to an individual user's security-related items including: <ul style="list-style-type: none"><li>▪ Change Password (authenticated user changing their password).</li></ul>
<b>Search</b>	Access to the Contracting Entity Search screen (State users, ESCs and Contracting Entity users with access to more than one Contracting Entity.).

## ***Error Processing***

All information entered and saved on the system is verified to ensure it conforms to data entry guidelines and system rules. The site performs two types of checks on information entered: Input Edits and Business Rule Edits.

### ***Input Edits***

Whenever you save information or proceed to a new screen, the site checks for input errors. These errors may include entry errors such as an invalid data entry (such as entering a 4-digit Zip Code), or a non-logical entry (e.g., entering a greater number of eligible than enrolled children).

If a form contains an input error and the user selects **Save**, the screen either displays the error code and description in red at the top of the page (and the error code is a letter) or displays a message next to the field in error. Input errors must be corrected before you can proceed. The system will not save data entered on a screen that contains an input error. The user must correct the input errors and select **Save** again.

Site ID	Site Name	Total Enrollment	Total Eligible
1000	Test CE - Test Site Total Eligible cannot exceed Total Enrollment	50	80

**Figure 6: Examples of an Input Error (Partial Screen)**

### ***Business Rule Edits***

Business rule edits are used to ensure that entered data on a form conforms to state-defined guidelines/requirements and federal regulation. Once the user initiates a save, TX-UNPS will perform business rule edit checks after all input errors have been corrected and display a confirmation screen stating that data entered has been saved and identifies whether errors exist.

The user may correct business rule errors immediately or at another time. The entered data will not be lost. The errors will display at the top of the screen with an error code (usually 4-5 digits) and error description. Business rule edits do not prohibit the system from saving the data entered on the screen.

Code	Error Description
18207	Must Indicate either Traditional SFSP or Seamless Summer Option.

**Contact Information:**

1. Name: Salutation: Mr. First Name: Jim Last Name: Smith

2. Email Address: jjimsmith@work.edu

3. Phone: (916) 556-2255 Ext: 56 Fax: (916) 558-9966

4. Title: Director of Finance

**Due Date: December 31, 2012**

**Summer Program Intention**

5.  Intends to offer 2011 summer meals through the following program:

- a. Traditional Summer Food Service Program (SFSP)
- b. Seamless Summer Option

**Figure 7: Example of a Business Rule Error (Partial Screen)**

In addition, business rule edits have an error severity that indicates whether an error is considered an Error or a Warning. Errors appear in red and must be corrected before the form can be submitted. Warnings appear in blue and indicate an “out of the ordinary” data value. Warning errors do not need to be corrected prior to form submission.

Code	Warning Description
001	The Application Packet is not considered complete until the prior year's Food Safety Inspection Report has been submitted.

**Figure 8: Example of a Warning Error**

**Note:** State administrators maintain the business rule error messages. If you think an error message is incorrect or unclear, please contact the TX-UNPS Help Desk.

## Selecting a School Year

Information for Contracting Entities and sites is displayed based on the selected school year. Upon logging on to the system, the “active” school year is the default selection and displays in the top-right corner in the blue bar. In order to view information from a prior year, you will need to change the school year.

**Note:** A Contracting Entity will be unable to select a new year if they have not been granted the security right. Contact the TX-UNPS Help Desk and request access to the **Select Year** security right if you think this is in error.

### To select a school year

1. Select **Year** on the blue menu bar at the top of the page. The Year Select screen displays.
2. Select the year.

**Note:** The selected year is indicated by **<Selected**.

3. Use the menu bar to return to your task in the program.



**TIP:** The ability to view and/or modify a school year is controlled by the State’s system administrator. It is important to note that a school year may be set as “view only” to the Contracting Entities and “modify” to authorized State users.

Select Year
2011 - 2012
2010 - 2011 < Selected
2009 - 2010
2008 - 2009

Figure 9: Year Select screen

## Contracting Entity Search

**Note:** If you are associated with only one Contracting Entity, you will be unable to access the Contracting Entity Search screen. The system will always default to the Contracting Entity's data.

For most School Nutrition Programs functions, you must search for and select a Contracting Entity using the Contracting Entity Search function before beginning any task. When the Contracting Entity Search screen displays, you can search for the Contracting Entity using all or part of the Contracting Entity's ID, Name, or any other combination of parameters provided on this screen.

### To search for a Contracting Entity

1. On the menu bar, select **Search**. [If the Contracting Entity Search screen is already displayed, begin at Step 2.] The Contracting Entity Search screen displays.
2. Enter search parameters (see table for additional information on using the search parameters).
3. Select **Search**.
4. Select the Contracting Entity you wish to access.



**TIP:** The Contracting Entities List displays based upon the search criteria entered. If no selections were made, the list displays all available Contracting Entities with the designated status (default is "Active"). To display all Contracting Entities, leave all search parameters blank and select **Search**.

CE ID:	<input type="text"/>	Packet Status:	<input type="text"/>
Contracting Entity Name:	<input type="text"/>	Field Service Rep:	<input type="text"/>
TIN:	<input type="text"/>	Packet Assigned To:	<input type="text"/>
County:	<input type="text"/>	ESC Region:	<input type="text"/>
CD Code:	<input type="text"/>	Program Status:	<input type="text"/>
Contracting Entity Status:	<input type="text" value="Active"/>		
<input type="checkbox"/> Search all available Programs			
<input type="button" value="Search"/>			

Figure 10: Contracting Entity Search screen

Note: Users will only see Contracting Entities associated with their user account (e.g. ESC users will only see Contracting Entities in their region).

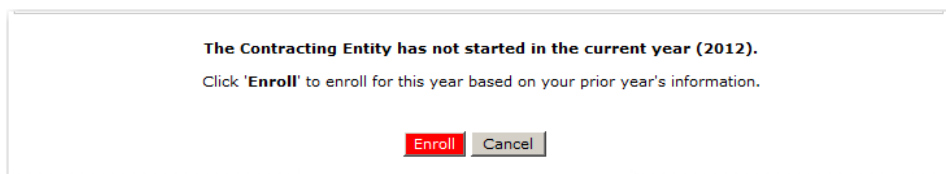
# 3

## **Applications**

*Now that you know how to access and log on to TX-UNPS, the remainder of the manual will explore the functions of the School Nutrition Programs module. Let's first look at the Applications component of TX-UNPS, where users manage yearly enrollment of Contracting Entities and sites and complete the appropriate forms required by the TDA.*

### **About the School Year Enrollment Process**

In order to participate in the School Nutrition Programs, Contracting Entities must submit an Application Packet to the State for review and approval. Before beginning the Application Packet, Contracting Entities must select the “Enroll” button on the Application Packet screen and click “Yes” on the subsequent confirmation screen. After a Contracting Entity is enrolled, they must complete all required applications and forms in the Application Packet for the school year.



**Figure 11: Enrolling in a New Program Year**

A new Application Packet must be submitted and approved at the beginning of each year. For Contracting Entities that are completing this process as part of their “annual update,” certain information from the previous year’s applications rolls over into the new program year. The Contracting Entity may modify this data for the new program year or leave the data as it is presented (and as was recorded in the previous year).

## ***Submitting an Application Packet***

The Contracting Entity can submit the Application Packet to the State once all required applications, online forms (e.g., Food Service Management Company contract), and supporting documents identified on the checklist are completed and saved without errors.

In order to be able to submit an Application Packet, the packet must contain:

- A completed Contracting Entity Application with no errors.
- At least one completed SNP Site Application with no errors.
- All items in the Checklist are identified as submitted to TDA.
- If the Contracting Entity had identified that they would be using a Food Safety Management Company on their Contracting Entity Application, the packet must contain at least one Food Service Management Company contract with a status of “Submitted”.

Once the Application Packet has been submitted to the State for approval, the packet history section of the Application Packet screen will display the event and the packet status changes to **Submitted for Approval**.

<b>Packet History</b>		
<b>Event</b>	<b>Event Date/Time</b>	<b>User</b>
The application packet was approved.	5/29/2009 7:23:11 AM	Developer
The application packet was submitted.	5/29/2009 7:22:27 AM	Developer
The application packet was changed requiring it to be submitted.	5/29/2009 7:22:14 AM	Developer

**Figure 12: Packet History (sub-section of the Application Packet screen)**

## Applications Menu

The Applications menu is the starting point for all tasks related to the annual School Nutrition Programs enrollment process. Menu items are based on security levels.

### To access the Applications Menu

---

1. On the blue menu bar, select **Applications**. The Applications Menu displays.
2. Select an application item to access that application function.

The following figure displays the complete list of Applications menu items for authorized state users. It is important to note that Contracting Entities have significantly fewer Applications menu items.

<b>Item</b>	<b>Description</b>
Contracting Entity Manager	SNP Contracting Entity's Profile, Site and Hold Information
Application Packet	Applications Forms (Contracting Entity and Site)
Verification Report	Mandatory Annual Verification Report
Verification Summary	Mandatory Annual Verification Report Summary
Food Safety Inspections	Number of Food Safety Inspections by Site
Food Safety Inspections Summary	Number of Food Safety Inspections by Site Summary
Fresh Fruit and Vegetable Program Grants	Fresh Fruit and Vegetable Grant Information by Site
Fresh Fruit and Vegetable Program Grant Overview	Fresh Fruit and Vegetable Grant Information by Site Overview
Fresh Fruit And Vegetable Program Summary	Fresh Fruit And Vegetable Program Summary
Summer Nutrition Program Costs	Total Costs Associated with Operating a Summer Nutrition Program
Capital Expenditure Request	Request for funds to purchase capital items > \$5,000
October Enrollment	October Enrollment and Eligibility by Site
Texas Summer Mandate	Summer Nutrition Programs Intent Declaration
Texas Summer Mandate Summary	Summer Nutrition Programs Intent Summary
Direct Certification / Direct Verification	Direct Certification / Direct Verification screens
Download Forms	Forms Available for Downloading

**Figure 13: Applications Menu screen (State view)**

## **Application Packet**

In order to participate in the School Nutrition Programs (SNP), Contracting Entities must submit an Application Packet to the State for review and approval. At the beginning of each program year, Contracting Entity data is rolled over and must be verified by Contracting Entities prior to submitting any claims.

The Application Packet contains the Contracting Entity application, site application(s), and other forms required as a part of the packet. After selecting Application Packet from the Applications menu, each required packet item and its status displays. If any packet item requires attention (such as an error within a form or a checklist item needs to be completed), a red arrow displays next to the Application Packet item. If the Application Packet item has been completed correctly and contains no errors, a green check displays next to the Application Packet item. For more details, see *Reviewing an Application*.

**Note:** Contracting Entities may not submit claims until their Application Packet has been approved for the respective program year.

**Note:** Once an Application Packet has been approved, when a Contracting Entity revises any item within the Application Packet, the Application Packet must be re-submitted for approval.

### **To access the Application Packet**

1. On the blue menu bar, select **Applications**. The Applications menu screen displays.
2. On the menu, select **Application Packet**. If necessary, search for and select a Contracting Entity. The Application Packet screen displays.
3. Select the packet item you want to access.

Packet Assigned To: Meredith Noel							
Action	Form Name	Latest Version	Status				
View   Revise	✔ Contracting Entity Application	Original	Approved				
Details	✔ FSMC Contract List		1 Contract				
Details	✔ Checklist Summary (7)						
Details	Application Packet Notes						
Site Applications	Approved	Pending	Return for Correction	Denied	Withdrawn/ Closed	Error	Total Applications
School Nutrition Program	0	1	0	0	0	1	2
Seamless Summer Option	0	0	0	0	0	0	0

Figure 14: Application Packet screen

## **Contracting Entity Application**

The Contracting Entity Application screen provides access to the Contracting Entity's annual application for the School Nutrition Programs for both new and renewing Contracting Entities. The Contracting Entity is required to complete a new Contracting Entity application annually; however, **the State has identified** select Contracting Entity data that rolls over from the previous year and pre-fills a new year's application.

### **To view a Contracting Entity application (Original)**

---

1. On the blue menu bar, select **Applications**.
2. From the Applications menu, select **Application Packet**. The current year's Application Packet screen displays.
3. Select View next to the **Contracting Entity Application** packet item. The Contracting Entity Application for the designated school year is displayed.

**Note:** If there are multiple versions of a Contracting Entity application within the system (i.e., revisions exist), the system defaults to the version with the most current Application Effective Date designated on the Contracting Entity Application's Internal Use Only section.

### **To view a Contracting Entity application (Revision)**

---

1. On the blue menu bar, select **Applications**.
2. From the Applications menu, select **Application Packet**. The most current year's Application Packet screen displays.
3. Select the revision link under the **Latest Version** column. The Contracting Entity Application History for the designated school year is displayed.
4. Select the application version you would like to view.



**TIP:** The View option appears in two situations: 1) If the user only has view-access security rights or 2) If the user has modify-access security rights BUT the Application Packet has been submitted to the State and is under State review and therefore can no longer be modified.

## To add a Contracting Entity application (New Contracting Entity)

---

1. On the blue menu bar, select **Applications**.
  2. From the Applications menu, select **Application Packet**. The most current year's Application Packet screen displays.
  3. Select Add next to the **Contracting Entity Application** packet item. The Contracting Entity Application for the designated school year is displayed.
  4. Enter required information.
  5. Select **Save**. A confirmation screen displays.
  6. Select **<Edit** to return to the Contracting Entity Application screen.
- OR-
- Select **Finish** to return to the Application Packet screen.



**TIP:** The Add option only appears for new Contracting Entities. If a Contracting Entity had an application in the previous year and has elected to enroll in the new year, the prior year's application information is rolled over into the new year's application as a starting point. The user would select **Modify** to review and update this information.

## To modify a Contracting Entity application

---

1. On the blue menu bar, select **Applications**.
  2. From the Applications menu, select **Application Packet**. The most current year's Application Packet screen displays.
  3. Select Modify next to the **Contracting Entity Application** packet item. The Contracting Entity Application for the designated school year is displayed.
  4. Modify any desired information.
  5. Select **Save**. A confirmation screen displays.
  6. Select **<Edit** to return to the Contracting Entity Application screen.
- OR-
- Select **Finish** to return to the Application Packet screen.



---

**TIP:** The Modify option only appears when the Application Packet has not been submitted. Once an application has been submitted and approved by the State, a revised application must be submitted (i.e., the Revise option is displayed).

---

## To delete a Contracting Entity application

---

1. On the blue menu bar, select **Applications**.
2. From the Applications menu, select **Application Packet**. The most current year's Application Packet screen displays.
3. Select Modify next to the **Contracting Entity Application** packet item. The Contracting Entity Application for the designated school year is displayed.
4. Select **DELETE** on the Edit menu in the top-right corner.
5. The system transfers you to the bottom of the screen and a warning message is displayed.
6. Select the **Delete** button at the bottom of the page. A confirmation message displays.



---

**WARNING:** A Contracting Entity application can only be deleted if the Contracting Entity has not yet submitted any claims for the school year.

Once the application has been deleted, it is permanently removed and cannot be restored. Use caution before deleting an application.

---

## To revise a Contracting Entity application

---

**Note:** Only state-approved applications can be revised. Once a Contracting Entity revises any item within the Application Packet, the Application Packet must be re-submitted and the state review and approval process starts again.

1. On the blue menu bar, select **Applications**.
2. From the Applications menu, select **Application Packet**. The most current year's Application Packet screen displays.
3. Select Revise next to the **Contracting Entity Application** packet item. The Contracting Entity Application for the designated school year is displayed.
4. Modify any desired information.
5. Select **Save**. A confirmation screen displays.
6. Select **<Edit** to return to the Contracting Entity Application screen you just modified.

-OR-

Select **Finish** to return to the Application Packet screen.



---

**TIP:** The Revise option only appears when the previously submitted Application Packet has been approved by the state.

---

## Site Applications – School Nutrition Program

Contracting Entities must complete a Site Application for each of their sites. The Site Application screen provides access to the Site’s annual application for the School Nutrition Programs for both new and renewing sites. Sites must complete a new application annually; however, **the State has identified** select site data that rolls over from the previous year and pre-fills a new year’s application.

### To access the Contracting Entity’s site list

1. On the blue menu bar, select **Applications**.
2. From the Applications menu, select **Application Packet**. The most current year’s Application Packet screen displays.
3. Under Site Applications, select **School Nutrition Program**. The Application Packet - SNP Site List screen displays.

Action	Site ID / Site Name	NSLP	SBP	ASCP	SMP	FFVP	Version/ Status	% Enroll Free/Redc Oct 2010
	<b>Totals</b>	67	56	0	0	0		
View   Modify Admin	0003 WILLIAMS H S	X	X				Original/ Pending Validation	0.00
View   Modify Admin	0004 VINES H S	X	X				Original/ Pending Validation	0.00
View   Modify Admin	0005 CLARK H S	X	X				Original/ Pending Validation	0.00
View   Modify Admin	0006 PLANO EAST SR H S	X	X				Original/ Pending Validation	0.00

Figure 15: Application Packet – SNP Site List screen

### To add a new site (for Contracting Entities)

1. On the blue menu bar, select **Applications**.
2. From the Applications menu, select **Application Packet**. The most current year’s Application Packet screen displays.
3. Under Site Applications, select **School Nutrition Program**. The Application Packet - SNP Site List screen displays.
4. At the bottom of the site list, select **Add Site Application**. The SNP Available Site(s) screen displays.

**Note:** The sites displayed on this screen are sites that are designated as SNP sites on the Site Profile screen, but who do not have a site application.

5. If the site you would like to add an application for is listed, select the site. If the site you would like to add an application for is not listed, select **Add New Site**. The ‘Quick’ Site Profile screen displays.
6. The system automatically defaults the Site ID to the next available ID for this Contracting Entity.



**TIP:** For most Contracting Entities, it is highly recommended that you use the Site ID assigned by the system. The system has verified that the assigned ID is unique and is the next available Site ID for the Contracting Entity. However, public/charter schools should use the campus code assigned by the Texas Education Agency.

7. Enter the Site Name and County.
8. Select **Save**. The Site Application for the new site is displayed.

The screenshot shows a form titled "Site Information" with three input fields: "Site ID" containing the value "0214", "Site Name" which is an empty text box, and "County" which is a dropdown menu.

Figure 16: ‘Quick’ Site Profile screen

## To view a Site Application

1. On the blue menu bar, select **Applications**.
2. From the Applications menu, select **Application Packet**. The current year’s Application Packet screen displays.
3. Under Site Applications, select **School Nutrition Program**. The Application Packet - SNP Site List screen displays.
4. Select View next to the site whose application you would like to view. The site’s Site Application is displayed.

## To modify a Site Application

---

1. On the blue menu bar, select **Applications**.
2. From the Applications menu, select **Application Packet**. The current year's Application Packet screen displays.
3. Under Site Applications, select **School Nutrition Program**. The Application Packet - SNP Site List screen displays.
4. Select **Modify** next to the site whose application you would like to view. The site's Site Application is displayed.
5. Modify any desired information.
6. Select **Save**. A confirmation screen displays.
7. Select **<Edit** to return to the Site Application screen.  
-OR-  
Select **Finish** to return to the SNP Site List screen.
8. Repeat **Steps** 4 through 7 for each site that will participate in the program.

## To delete a Site Application

---

1. On the blue menu bar, select **Applications**.
2. From the Applications menu, select **Application Packet**. The current year's Application Packet screen displays.
3. Under Site Applications, select **School Nutrition Program**. The Application Packet - SNP Site List screen displays.
4. Select **Modify** next to the site whose application you would like to delete. The site's Site Application is displayed.
5. Select **DELETE** on the Edit menu in the top-right corner.
6. The system transfers you to the bottom of the screen and a warning message is displayed.
7. Select the **Delete** button at the bottom of the page. A confirmation message displays.



---

**WARNING:** Only a site application that has not been approved can be deleted. Once the application has been deleted, it is permanently removed and cannot be restored. Use caution before deleting an application.

---

## To revise a Site Application

---

**Note:** Only state-approved applications can be revised. Once a Contracting Entity revises any item within the Application Packet, the Application Packet must be re-submitted and the state review and approval process starts again.

1. On the blue menu bar, select **Applications**.
2. From the Applications menu, select **Application Packet**. The current year's Application Packet screen displays.
3. Under Site Applications, select **School Nutrition Program**. The Application Packet - SNP Site List screen displays.
4. Select **Revise** next to the site whose application you would like to delete. The site's Site Application is displayed.
5. Modify any desired information.
6. Select **Save**. A confirmation screen displays.
7. Select **<Edit** to return to the Site Application screen.  
-OR-  
Select **Finish** to return to the SNP Site List screen.



---

**TIP:** The **Revise** option only appears when the previously submitted Application Packet has been approved by the state.

---

## Site Applications – Seamless Summer Option

Contracting Entities must complete a Site Application for each of their seamless summer sites. The Site Application screen provides access to the Site’s annual application for the Seamless Summer Options for both new and renewing sites. Sites must complete a new application annually; however, the State has identified select site data that rolls over from the previous year and pre-fills a new year’s application.

### To access the Contracting Entity’s site list

1. On the blue menu bar, select **Applications**.
2. From the Applications menu, select **Application Packet**. The most current year’s Application Packet screen displays.
3. Under Site Applications, select **Seamless Summer Option**. The Application Packet – Seamless Summer Option Site List screen displays.

Action	Site ID / Site Name	AM					Version/ Status	% Enroll Free/Redc Oct 2010
		BRK	SNK	LUN	SNK	SPR		
		<b>Totals</b>	2	0	1	0	0	
View   Modify Admin	0001 DIBOLL H S	X					Original / Error (14)	
View   Modify Admin	0102 DIBOLL PRI	X		X			Original / Pending Validation	0.00
<a href="#">Add Site Application</a>								

Figure 17: Application Packet – Seamless Summer Option Site List screen

### To add a new SSO site (for Contracting Entities)

1. On the blue menu bar, select **Applications**.
2. From the Applications menu, select **Application Packet**. The most current year’s Application Packet screen displays.
3. Under Site Applications, select **Seamless Summer Option**. The Application Packet - Seamless Summer Option Site List screen displays.
4. At the bottom of the site list, select **Add Site Application**. The SSO Available Site(s) screen displays.

**Note:** The sites displayed on this screen are sites that are designated as SSO sites on the Site Profile screen, but who do not have a site application.

5. If the site you would like to add an application for is listed, select the site. If the site you would like to add an application for is not listed, select **Add New Site**. The ‘Quick’ Site Profile screen displays.
6. The system automatically defaults the Site ID to the next available ID for this Contracting Entity. The user can enter in another Site ID; however, it must be 4 digits and must not have already been assigned to another site.



**TIP:** It is highly recommended that you use the Site ID assigned by the system. The system has verified that the assigned ID is unique and is the next available Site ID for the Contracting Entity.

7. Enter the Site Name and County.
8. Select **Save**. The SSO Site Application for the new site is displayed.

The screenshot shows a form titled "Site Information" with three input fields: "Site ID" containing the value "0214", "Site Name" which is an empty text box, and "County" which is a dropdown menu.

Figure 18: ‘Quick’ Site Profile screen

## To view a SSO Site Application

1. On the blue menu bar, select **Applications**.
2. From the Applications menu, select **Application Packet**. The current year’s Application Packet screen displays.
3. Under Site Applications, select **Seamless Summer Option**. The Application Packet - Seamless Summer Option Site List screen displays.
4. Select View next to the site whose application you would like to view. The site’s SSO Site Application is displayed.

## To modify a SSO Site Application

---

1. On the blue menu bar, select **Applications**.
2. From the Applications menu, select **Application Packet**. The current year's Application Packet screen displays.
3. Under Site Applications, select **Seamless Summer Option**. The Application Packet - Seamless Summer Option Site List screen displays.
4. Select **Modify** next to the site whose application you would like to view. The site's SSO Site Application is displayed.
5. Modify any desired information.
6. Select **Save**. A confirmation screen displays.
7. Select **<Edit** to return to the SSO Site Application screen.  
-OR-  
Select **Finish** to return to the Seamless Summer Option Site List screen.
8. Repeat **Steps** 4 through 7 for each site that will participate in the program.

## To delete a SSO site application

---

1. On the blue menu bar, select **Applications**.
2. From the Applications menu, select **Application Packet**. The current year's Application Packet screen displays.
3. Under Site Applications, select **Seamless Summer Option**. The Application Packet - Seamless Summer Option Site List screen displays.
4. Select **Modify** next to the site whose application you would like to delete. The site's SSO Site Application is displayed.
5. Select **DELETE** on the Edit menu in the top-right corner.
6. The system transfers you to the bottom of the screen and a warning message is displayed.
7. Select the **Delete** button at the bottom of the page. A confirmation message displays.



---

**WARNING:** Only a site application that has not been approved can be deleted. Once the application has been deleted, it is permanently removed and cannot be restored. Use caution before deleting an application.

---

## To revise a SSO Site Application

---

**Note:** Only state-approved applications can be revised. Once a Contracting Entity revises any item within the Application Packet, the Application Packet must be re-submitted and the state review and approval process starts again.

1. On the blue menu bar, select **Applications**.
2. From the Applications menu, select **Application Packet**. The current year's Application Packet screen displays.
3. Under Site Applications, select **Seamless Summer Option**. The Application Packet - Seamless Summer Option Site List screen displays.
4. Select **Revise** next to the site whose application you would like to delete. The site's SSO Site Application is displayed.
5. Modify any desired information.
6. Select **Save**. A confirmation screen displays.
7. Select **<Edit** to return to the SSO Site Application screen.

-OR-

Select **Finish** to return to the Seamless Summer Option Site List screen.



---

**TIP:** The **Revise** option only appears when the previously submitted Application Packet has been approved by the State.

---

## Food Service Management Company (FSMC) Contract List

If the Contracting Entity's School Nutrition Programs is managed by a Food Service Management Company (FSMC), then information regarding the FSMC contract is **required** as a part of the Application Packet. The FSMC Application Packet item is initiated when the Contracting Entity has specified that they will be using a FSMC on their Contracting Entity application. If the Contracting Entity has not specified that they will be using a FSMC for the respective year, the FSMC Contract List will not appear on the Application Packet screen.

## To access the Food Service Management Company Contract List

1. On the blue menu bar, select **Applications**. The Applications menu screen displays.
2. On the menu, select **Application Packet**. The Application Packet screen displays.
3. Select **Details** next to **FSMC Contract List**. The Food Service Management Company Contracts screen displays.

Action	Company Name	Initial Year	Final Year	Status
<a href="#">View</a>   <a href="#">Modify</a>   <a href="#">Admin</a>	ABL Management, Inc.	2010-2011	2014-2015	Approved

Figure 19: Food Service Management Company Contracts list screen

## To add a Food Service Management Company contract

1. On the blue menu bar, select **Applications**. The Applications menu screen displays.
2. On the menu, select **Application Packet**. The Application Packet screen displays.
3. Select **Details** next to **FSMC Contract List**. The Food Service Management Company Contracts list screen displays.
4. Select the **Create New Contract** button. The Food Service Management Company Contract for the specified year is displayed.
5. Select the company. The Company Contact Information is automatically populated.

6. Enter additional contract information.
  7. Select **Save**. A confirmation screen displays.
  8. Select **<Edit** to return to the Food Service Management Company Contract screen.
- OR-
- Select **Finish** to return to the Food Service Management Company Contracts list screen.

---

## To modify a Food Service Management Company contract

---

1. On the blue menu bar, select **Applications**. The Applications menu screen displays.
  2. On the menu, select **Application Packet**. The Application Packet screen displays.
  3. Select **Details** next to **FSMC Contract List**. The Food Service Management Company Contracts list screen displays.
  4. Select **Modify** next to the company you want to modify.
  5. Modify any desired information.
  6. Select **Save**. A confirmation screen displays.
  7. Select **<Edit** to return to the Food Service Management Company Contract screen.
- OR-
- Select **Finish** to return to the Food Service Management Company Contracts list screen.



---

**WARNING:** Contract information can be modified only until the State has approved the FSMC contract. Once the FSMC contract has been approved the user would only use the Modify option to early terminate or cancel the FSMC contract.

---

---

## To delete a Food Service Management Company contract

---

1. On the blue menu bar, select **Applications**. The Applications menu screen displays.
2. On the menu, select **Application Packet**. The Application Packet screen displays.
3. Select **Details** next to **FSMC Contract List**. The Food Service Management Company Contracts list screen displays.
4. Select **Modify** next to the company you would like to delete. The Food Service Management Company Contract screen is displayed.

5. Select **DELETE** on the Edit menu in the top-right corner.
6. The system transfers you to the bottom of the screen and a warning message is displayed.
7. Select the **Delete** button at the bottom of the page. A confirmation message displays.



---

**WARNING:** Only a contract who's Application Packet has not been approved can be deleted. Once the contract has been deleted, it is permanently removed and cannot be restored. Use caution before deleting a contract.

---

## To early terminate an active Food Service Management Company contract

---



---

**TIP:** Within the system, Food Service Management Company contracts automatically renew based on the number of optional renewal years specified on the Food Service Management Company Contract screen. To end a contract mid-year, use the Early Termination section of the form.

---

1. On the blue menu bar, select **Applications**. The Applications menu screen displays.
  2. On the menu, select **Application Packet**. The Application Packet screen displays.
  3. Select **Details** next to **FSMC Contract List**. The Food Service Management Company Contracts list screen displays.
  4. Select **Modify** next to the company you want to modify.
  5. Under the Early Termination Information section, identify that you are terminating the contract early and enter the date and reason for early termination.
  6. Select **Save**. A confirmation screen displays.
  7. Select **<Edit** to return to the Food Service Management Company Contract screen.
- OR-
- Select **Finish** to return to the Food Service Management Company Contracts list screen.

**Early Termination Information**

To terminate this Food Service Management Company contract mid-school year, please complete the following questions.

8. Early Termination?  Yes  No

9. Early Termination Date:

10. Early Termination Comments:

Figure 20: Food Service Management Company Contracts screen (partial) - Termination

## To cancel a renewing Food Service Management Company contract



**TIP:** Within the system, Food Service Management Company contracts automatically renew based on the number of years specified on the Food Service Management Company Contract screen. Only contracts in a renewal year can be cancelled. This option is not available in the initial year.

1. On the blue menu bar, select **Applications**. The Applications menu screen displays.
  2. On the menu, select **Application Packet**. The Application Packet screen displays.
  3. Select **Details** next to **FSMC Contract List**. The Food Service Management Company Contracts list screen displays.
  4. Select **Modify** next to the company you want to modify.
  5. Under the Cancellation of Renewal Years section, check the box identifying that you are cancelling future renewals with this Food Service Management Company.
  6. Select **Save**. A confirmation screen displays.
  7. Select **<Edit** to return to the Food Service Management Company Contract screen.
- OR-
- Select **Finish** to return to the Food Service Management Company Contracts list screen.

**Cancellation of Renewal Years**

11.  This Food Service Management Company contract will not be renewed for the upcoming school year 2011-2012.

Figure 21: Food Service Management Company Contracts screen (partial) - Cancellation

## Checklist

A checklist is automatically generated based upon answers to specific questions from the Contracting Entity and site applications. The checklist identifies supplemental documents that need to be submitted to the state. The Checklist feature allows Contracting Entities to keep track of documents and their dates of submission. State users use this feature to identify when documents have been received and to denote the status of the documents.

### To access a Checklist

---

1. On the blue menu bar, select **Applications**. The Applications menu screen displays.
2. On the menu, select **Application Packet**. The Application Packet screen displays.
3. Select **Checklist Summary**. The Checklist Summary screen displays.

SNP Checklist Summary				
01425	Status: Active			
<b>Sample Contracting Entity</b>				
DBA:				
455 Street Address				
Plano, TX 75666				
County District Code: 043-111				
ESC Region: 10				
New Contracting Entity		Total Items	Submitted Items	Approved Items
Sample Contracting Entity		7	7	7
School Nutrition Programs Sites		Total Items	Submitted Items	Approved Items
Test CE - Test Site		0	0	0

Figure 22: Checklist Summary screen

### To view a Checklist

---

1. On the blue menu bar, select **Applications**. The Applications menu screen displays.
2. On the menu, select **Application Packet**. The Application Packet screen displays.
3. Select **Checklist Summary**. The Checklist Summary screen displays.
4. Select the Contracting Entity or Site whose checklist you wish to view. The Checklist screen displays.

**Note:** Only Contracting Entities and sites who have completed their applications and who have additional required documents will have a checklist.


Required Forms/Documents to send to TDA	Document Submitted to TDA	Date Submitted to TDA	Document on File w/TDA	Status	Status Date	Last Updated By
Single Audit Identification Data (H1569)	<input type="checkbox"/>	<input type="text"/>	<input type="checkbox"/>	Pending Approval	02/17/2011	RWESTERMAN
Application for Texas Identification Number (AP-152)	<input type="checkbox"/>	<input type="text"/>	<input type="checkbox"/>	Pending Approval	02/17/2011	RWESTERMAN
Attachment B: Meal Count & Collect Procedures 	<input type="checkbox"/>	<input type="text"/>	<input type="checkbox"/>	Pending Approval	02/17/2011	RWESTERMAN
SNP Questionnaire - Compliance with Civil Rights Act of 1964	<input type="checkbox"/>	<input type="text"/>	<input type="checkbox"/>	Pending Approval	02/17/2011	RWESTERMAN
Commodity Agreement	<input type="checkbox"/>	<input type="text"/>	<input type="checkbox"/>	Pending Approval	02/17/2011	RWESTERMAN
FNS Instruction 113-1 (Excerpt)	<input type="checkbox"/>	<input type="text"/>	<input type="checkbox"/>	Pending Approval	02/17/2011	RWESTERMAN
Hazard Analysis Critical Control Points (HACCP) Checklist (FND-104)	<input type="checkbox"/>	<input type="text"/>	<input type="checkbox"/>	Pending Approval	02/17/2011	RWESTERMAN
Local Wellness Policy Checklist (FND-105)	<input type="checkbox"/>	<input type="text"/>	<input type="checkbox"/>	Pending Approval	02/17/2011	RWESTERMAN
Permanent Agreement	<input type="checkbox"/>	<input type="text"/>	<input type="checkbox"/>	Pending Approval	02/17/2011	RWESTERMAN
Proof of IRS 501c3 Tax Exemption	<input type="checkbox"/>	<input type="text"/>	<input type="checkbox"/>	Pending Approval	02/17/2011	RWESTERMAN
Vendor Direct Deposit/Advance Payment Authorization (74-176)	<input type="checkbox"/>	<input type="text"/>	<input type="checkbox"/>	Pending Approval	02/17/2011	RWESTERMAN

Figure 23: Checklist screen

## To update a Checklist

1. On the blue menu bar, select **Applications**. The Applications menu screen displays.
2. On the menu, select **Application Packet**. The Application Packet screen displays.
3. Select **Checklist Summary**. The Checklist Summary screen displays.
4. Select the Contracting Entity or Site whose checklist you wish to update. The Checklist screen displays.
5. Identify whether the document has been submitted and the submission date. The Date Submitted to TDA field automatically defaults to the system date. This can be changed by the user. A checklist is not considered complete until all checklist items are identified as having been submitted to TDA.
6. Select Save. The Checklist Summary screen displays.

## To upload an attachment to a Checklist item

**Note:** If the checklist item has a paper clip icon next to it, you can upload an attachment. Files in the following formats can be uploaded: .doc, .xls, .pdf, and .jpg.

1. Select the paper clip. The Checklist File Upload Details screen displays.
2. Use the **Browse** button to select the file to upload. If desired, enter a brief comment (field is not required)
3. Select **Save**.

Checklist File Upload Detail	
<b>Checklist</b>	
Program:	School Nutrition Programs
Checklist Item:	Attachment B: Meal Count & Collect Procedures
<b>Upload Detail</b>	
1. File To Upload:	<input type="text"/> <input data-bbox="1242 808 1323 829" type="button" value="Browse..."/>
2. Comment:	<input type="text"/>

Figure 24: Checklist File Upload Detail screen

## Fresh Fruit and Vegetable Program Application

Contracting Entities invited by the State to participate in the Fresh Fruit and Vegetable Program (FFVP) must complete a Fresh Fruit and Vegetable Program Application. The Fresh Fruit and Vegetable Program Application is accessed from the Application Packet screen; however, it can be submitted outside of the Application Packet.

**Note:** Only Contracting Entities invited by the State to participate in the Fresh Fruit and Vegetable Program will see a Fresh Fruit and Vegetable Program Application item on their Application Packet screen.

### To access and view a Fresh Fruit and Vegetable Program application

1. On the blue menu bar, select **Applications**.
2. From the Applications menu, select **Application Packet**. The current year's Application Packet screen displays.
3. Select View next to the **Fresh Fruit and Vegetable Application** packet item. The Fresh Fruit and Vegetable Program Application for the designated school year is displayed.

### To add a Fresh Fruit and Vegetable Program application

1. On the blue menu bar, select **Applications**.
2. From the Applications menu, select **Application Packet**. The current year's Application Packet screen displays.
3. Select Add next to the **Fresh Fruit and Vegetable Application** packet item. The Fresh Fruit and Vegetable Program Application for the designated school year is displayed.
4. Enter the Contracting Entity's Contact Information and select from the invited sites those that are interested in participating in the Fresh Fruit and Vegetable Program.

**Note:** Only the sites that the State has invited to participate in the Fresh Fruit and Vegetable Program will display on the screen; this may be a subset of all the sites associated with the Contracting Entity.

5. Select **Save**. A confirmation screen displays.
6. Select **<Edit** to return to the Fresh Fruit and Vegetable Program Application screen.  
-OR-  
Select **Finish** to return to the Application Packet screen.

Packet Assigned To: unassigned			
Action	Form Name	Latest Version	Status
View   Revise	✓ Contracting Entity Application	Rev. 1	Approved
Add	Fresh Fruit And Vegetable Program Application		Not Started
Details	Checklist Summary		
Details	Application Packet Notes		

Figure 25: Application Packet screen – Fresh Fruit and Vegetable Program Application option

## **To modify a Fresh Fruit and Vegetable Program application**

---

1. On the blue menu bar, select **Applications**.
2. From the Applications menu, select **Application Packet**. The most current year's Application Packet screen displays.
3. Select **Modify** next to the Fresh Fruit and Vegetable Program Application packet item. The Fresh Fruit and Vegetable Program Application for the designated school year is displayed.
4. Update desired information.
5. Select **Save**. A confirmation screen displays.
6. Select **<Edit** to return to the Fresh Fruit and Vegetable Program Application screen.  
-OR-  
Select **Finish** to return to the Application Packet screen.

**Note:** The application is automatically submitted when all required fields have been completed without errors and the user selects the **Save** button. If you do not correct the errors, the form status is "Error".

## **To delete a Fresh Fruit and Vegetable Program application**

---

1. On the blue menu bar, select **Applications**.
2. From the Applications menu, select **Application Packet**. The most current year's Application Packet screen displays.
3. Select **Modify** next to the Fresh Fruit and Vegetable Program Application packet item. The Fresh Fruit and Vegetable Program Application for the designated school year is displayed.
4. Select **DELETE** on the Edit menu in the top-right corner.
5. The system transfers you to the bottom of the screen and a warning message is displayed.
6. Select the **Delete** button at the bottom of the page. A confirmation message displays.
7. Select **Finish**.



**WARNING:** Once the application has been deleted, it is permanently removed and cannot be restored. Use caution before deleting an application.

## **Verification Report**

Contracting Entities use the Verification Report function to complete and submit the mandatory

annual verification report to the State. The verification report contains information about sites collecting applications, site enrollment, eligibility information, and verification results.

## To access a Verification Report

---

1. On the blue menu bar, select **Applications**. The Applications menu screen displays.
2. On the menu, select **Verification Report**. The Verification Reports list screen displays.

## To complete or modify a Verification Report

---

1. On the blue menu bar, select **Applications**. The Applications menu screen displays.
2. On the menu, select **Verification Report**. The Verification Reports list screen displays.
3. Select **Modify** next to the year that you would like to enter data into the Verification Report. The Verification Report screen for the designated year selected is displayed.
4. Enter information into the screen fields provided.
5. Select **Save**. A confirmation screen displays.
6. Select **<Edit** to return to the Verification Report screen.  
-OR-  
Select **Finish** to return to the Verification Reports list screen.

**Note:** The Verification Report is automatically submitted when all required fields have been completed without errors and the user selects the **Save** button. If you do not correct the errors, the form status is "Error".

## To delete a Verification Report

---

1. On the blue menu bar, select **Applications**. The Applications menu screen displays.
2. On the menu, select **Verification Report**. The Verification Reports list screen displays.
3. Select **Modify** next to the year that you would like to delete an existing Verification Report. The Verification Report screen for the designated year selected is displayed.
4. Select **DELETE** on the Edit menu in the top-right corner.
5. The system transfers you to the bottom of the screen and a warning message is displayed.
6. Select the **Delete** button at the bottom of the page. A confirmation message displays.
7. Select **Finish**.



**WARNING:** Only Verification Reports that have not been submitted can be deleted. Selecting the **DELETE** button permanently deletes the Verification Report from the system. It will not be recoverable once deleted.

## **Food Safety Inspections**

The Food Safety Inspections screen allows Contracting Entities to enter annual food safety inspection information for each of their sites. Food Safety Inspection reports are submitted for the prior year. Hence, during the 2011-2012 year, Contracting Entities are submitting Food Safety Inspection reports for the 2010-2011 year.

**Note:** Only enrolled sites are listed. If the site has an application on file for the designated year, it will be listed and the street address on that application will be displayed.

### **To access a Food Safety Inspections report**

---

1. On the blue menu bar, select **Applications**. The Applications menu screen displays.
2. On the menu, select **Food Safety Inspections**. The Food Safety Inspections list screen displays.

### **To complete or modify a Food Safety Inspections report**

---

1. On the blue menu bar, select **Applications**. The Applications menu screen displays.
2. On the menu, select **Food Safety Inspections**. The Food Safety Inspections list screen displays.
3. Select **Modify** next to the year that you would like to enter data into the Food Safety Inspections screen. The Food Safety Inspections screen for the designated year selected is displayed.
4. Enter information into the screen fields provided.
5. Select **Save**. A confirmation screen displays.
6. Select **<Edit** to return to the Food Safety Inspections screen.  
-OR-  
Select **Finish** to return to the Food Safety Inspections list screen.

**Note:** The Food Safety Inspections Report is automatically submitted when all required fields have been completed without errors and the user selects the **Save** button. If you do not correct the errors, the form status is "Error".

### **To delete a Food Safety Inspections report**

---

1. On the blue menu bar, select **Applications**. The Applications menu screen displays.
2. On the menu, select **Food Safety Inspections**. The Food Safety Inspections list screen displays.
3. Select **Modify** next to the year that you would like to enter data into the Food Safety Inspections screen. The Food Safety Inspections screen for the designated year selected is displayed.

4. Select **DELETE** on the Edit menu in the top-right corner.
5. The system transfers you to the bottom of the screen and a warning message is displayed.
6. Select the **Delete** button at the bottom of the page. A confirmation message displays.
7. Select **Finish**.



---

**WARNING:** Only Food Safety Inspections reports that have not been submitted can be deleted. Selecting the DELETE button permanently deletes the Food Safety Inspections reports from the system. It will not be recoverable once deleted.

---

## **Summer Nutrition Program Costs**

The Summer Nutrition Program Costs screen allows Contracting Entities to enter their total costs related to operating a summer nutrition program.

### **To access Summer Nutrition Program Costs**

---

1. On the blue menu bar, select **Applications**. The Applications menu screen displays.
2. On the menu, select **Summer Nutrition Program Costs**. The Summer Nutrition Program Costs list screen displays.

### **To complete or modify Summer Nutrition Program Costs**

---

1. On the blue menu bar, select **Applications**. The Applications menu screen displays.
2. On the menu, select **Summer Nutrition Program Costs**. The Summer Nutrition Program Costs list screen displays.
3. Select **Modify** next to the year that you would like to enter data into the Summer Nutrition Program Costs screen. The Summer Nutrition Program Costs screen for the designated year selected is displayed.
4. Enter information into the screen fields provided.
5. Select **Save**. A confirmation screen displays.
6. Select **<Edit** to return to the Summer Nutrition Program Costs screen.  
-OR-  
Select **Finish** to return to the Summer Nutrition Program Costs list screen.

**Note:** The form is automatically submitted when all required fields have been completed without errors and the user selects the **Save** button. If you do not correct the errors, the form status is "Error".

### **To delete Summer Nutrition Program Costs**

---

1. On the blue menu bar, select **Applications**. The Applications menu screen displays.
2. On the menu, select **Summer Nutrition Program Costs**. The Summer Nutrition Program Costs list screen displays.
3. Select **Modify** next to the year that you would like to enter data into the Summer Nutrition Program Costs screen. The Summer Nutrition Program Costs screen for the designated year selected is displayed.
4. Select **DELETE** on the Edit menu in the top-right corner.
5. The system transfers you to the bottom of the screen and a warning message is displayed.
6. Select the **Delete** button at the bottom of the page. A confirmation message displays.
7. Select **Finish**.



---

**WARNING:** Only Summer Nutrition Program Costs reports that have not been submitted can be deleted. Selecting the DELETE button permanently deletes the form from the system. It will not be recoverable once deleted.

---

## **Capital Expenditure Request**

The Capital Expenditure Request screen allows Contracting Entities to submit capital expenditure requests. Contracting Entities must submit capital expenditure requests for each capital item that is >\$5,000. A Contracting Entity may submit as many capital expenditure requests as required in a given year.

### **To access Capital Expenditure Request**

---

1. On the blue menu bar, select **Applications**. The Applications menu screen displays.
2. On the menu, select **Capital Expenditure Request**. The Capital Expenditure Requests list screen displays.

### **To add a Capital Expenditure Request**

---

1. On the blue menu bar, select **Applications**. The Applications menu screen displays.
2. On the menu, select **Capital Expenditure Request**. The Capital Expenditure Requests list screen displays.
3. Select **Create New Request** button. A blank Capital Expenditure Request screen is displayed.
4. Enter information into the screen fields provided.
5. Select **Save**. A confirmation screen displays.
6. Select **<Edit** to return to the Capital Expenditure Request screen.  
-OR-  
Select **Finish** to return to the Capital Expenditure Requests list screen.

**Note:** The form is automatically submitted when all required fields have been completed without errors and the user selects the **Save** button. If you do not correct the errors, the form status is "Error".



---

**TIP:** The maximum Quantity you may enter is "9,999". The maximum Cost per Item you may enter is "\$99,999.99". If this is insufficient, please enter your quantity on multiple lines.

---



---

**TIP:** % Paid by Program Funds should be entered in whole numbers. If the user enters a decimal, upon selecting Save, the system will use normal rounding to derive a whole number.

---

## To modify a Capital Expenditure Request

---

1. On the blue menu bar, select **Applications**. The Applications menu screen displays.
2. On the menu, select **Capital Expenditure Request**. The Capital Expenditure Request list screen displays.
3. Select **Modify** next to the request that you would like to modify data. The Capital Expenditure Request screen for the selected request is displayed.
4. Modify any desired information.
5. Select **Save**. A confirmation screen displays.
6. Select **<Edit** to return to the Capital Expenditure Request screen.  
-OR-  
Select **Finish** to return to the Capital Expenditure Request list screen.

## To delete Capital Expenditure Request

---

1. On the blue menu bar, select **Applications**. The Applications menu screen displays.
2. On the menu, select **Capital Expenditure Request**. The Capital Expenditure Requests list screen displays.
3. Select **Modify** next to the year that you would like to enter data into the Capital Expenditure Request screen. The Capital Expenditure Request screen for the selected request is displayed.
4. Select **DELETE** on the Edit menu in the top-right corner.
5. The system transfers you to the bottom of the screen and a warning message is displayed.
6. Select the **Delete** button at the bottom of the page. A confirmation message displays.
7. Select **Finish**.



---

**WARNING:** Only Capital Expenditure Requests that have not been submitted can be deleted. Selecting the **DELETE** button permanently deletes the Capital Expenditure Request from the system. It will not be recoverable once deleted.

---

## **Texas Summer Mandate**

By state law, Contracting Entities that meet certain criteria are required to operate a Summer Food Service Program (SFSP), Seamless Summer Option program (SSO) or submit a waiver to the State identifying why they are unable to meet this regulation. The Texas Summer Mandate screen allows Contracting Entities to identify which program they will operate or make a request for a waiver for a specific school year.

### **To access Texas Summer Mandate**

---

1. On the blue menu bar, select **Applications**. The Applications menu screen displays.
2. On the menu, select **Texas Summer Mandate**. The Texas Summer Mandate list screen displays.

### **To complete or modify Texas Summer Mandate**

---

1. On the blue menu bar, select **Applications**. The Applications menu screen displays.
2. On the menu, select **Texas Summer Mandate**. The Texas Summer Mandate list screen displays.
3. Select **Modify** next to the year that you would like to enter data into the Texas Summer Mandate screen. The Texas Summer Mandate screen for the designated year selected is displayed.
4. Enter information into the screen fields provided.
5. Select **Save**. A confirmation screen displays.
6. Select **<Edit** to return to the Texas Summer Mandate screen.  
-OR-  
Select **Finish** to return to the Texas Summer Mandate list screen.

**Note:** The form is automatically submitted when all required fields have been completed without errors and the user selects the **Save** button. If you do not correct the errors, the form status is "Error".



**TIP:** The Contracting Entity can select one of two options: 1) Operating a summer program or 2) Requesting a waiver from operating a summer program. The questions beneath each option are activated **ONLY** once the user has selected an option.

### **To delete Texas Summer Mandate**

---

1. On the blue menu bar, select **Applications**. The Applications menu screen displays.
2. On the menu, select **Texas Summer Mandate**. The Texas Summer Mandate list screen displays.

3. Select **Modify** next to the year that you would like to enter data into the Texas Summer Mandate screen. The Texas Summer Mandate screen for the designated year selected is displayed.
4. Select **DELETE** on the Edit menu in the top-right corner.
5. The system transfers you to the bottom of the screen and a warning message is displayed.
6. Select the **Delete** button at the bottom of the page. A confirmation message displays.
7. Select **Finish**.



---

**WARNING:** Only Texas Summer Mandate forms that have not been submitted can be deleted. Selecting the **DELETE** button permanently deletes the form from the system. It will not be recoverable once deleted.

---

## **Direct Certification/Direct Verification**

The Direct Certification/Direct Verification provides authorized users access to the Direct Certification/Direct Verification system from within TX-UNPS.

### **To access Direct Certification/Direct Verification**

---

1. On the blue menu bar, select **Applications**. The Applications menu screen displays.
2. On the menu, select **Direct Certification/Direct Verification**. The Direct Certification/Direct Verification screen displays.
3. Select the **<Back** button to return to previous screen.



**Figure 26: Direct Certification / Direct Verification screen**

**Note:** By selecting the **Direct Certification / Direct Verification** link on this screen, a new browser window will open providing access to the Direct Certification/Direct Verification system.

The screen will not open if you have a pop-up blocker running on your system. If this occurs, hold down the **CTRL** key and select **Direct Certification / Direct Verification** again.

Your TX-UNPS browser session will remain active until the system times out (i.e., 20 minutes). If using the Direct Certification/Direct Verification system takes longer than 20 minutes, you will need to re-login to TX-UNPS.

## **Download Forms**

The Download Forms function allows users to view, download and/or print all forms and documents made available on the site by the State.

### **To access Download Forms**

---

1. On the blue menu bar, select **Applications**. The Applications menu screen displays.
2. On the menu, select **Download Forms**. The Download Forms screen displays.

### **To download or view a form**

---

1. On the blue menu bar, select **Applications**. The Applications menu screen displays.
2. On the menu, select **Download Forms**. The Download Forms screen displays a list of all available forms.
3. Select the Form ID of the form you wish to download. If the form is a document, a gray dialog box appears.
4. Select **Open** to view the form.  
- OR -  
Select **Save** to save the form to your computer.

**Note:** The software application associated with the form will initiate the opening of the form. For example, if the form is a Microsoft Word document, Microsoft Word on your desktop will initiate the opening of the form. This is also true with Microsoft Excel or Adobe Acrobat forms.

5. Select the **<Back** button to return to the previous screen.

<b>Download Forms</b>			
<b>Form ID</b>	<b>Description</b>	<b>Last Modified</b>	<b>New Contracting Entity?</b>
SNP-008	FND-119 - Assisted Nutrient Standard Menu Planning ANSMP) Application	12/08/2010	
SNP-009	H1569 - Single Audit Identification Data	12/08/2010	
SNP-010	Questionnaire - Compliance with Civil Rights Act of 1964	12/08/2010	
SNP-011	AP-152 - Application for Texas Identification Number (TIN)	12/08/2010	
SNP-012	74-176 - Vendor Direct Deposit/Advance Payment Notification Authorization	12/08/2010	
SNP-013	FND-105 - Local Wellness Policy Checklist	12/08/2010	

**Figure 27: Download Forms screen**



**TIP:** The New Contracting Entity? column indicates whether the form is required for submission by Contracting Entities new to the School Nutrition Programs.

# 4

## Claims

The TX-UNPS Claims component allows Contracting Entities to submit monthly online reimbursement claim requests to the State, review claim rates, and review historical payment summaries.

### About the Claims Process

A Contracting Entity submits a reimbursement claim to the State for every month in which one or more sites participates in the School Nutrition Programs. Contracting Entities may enter Contracting Entity and site information into the monthly claim form beginning at the first of every month. Contracting Entities have sixty days from the last day of the claim month/year to submit an original claim

**Note:** Claims cannot be created for a month if there is no approved Application Packet in effect for that period. If you cannot access claims for a specific month, be sure your Application Packet has been approved. If your Application Packet has been approved and you still cannot enter a claim for a specific month, contact the TX-UNPS Help Desk to validate the effective date of the Contracting Entity application and Site application.

At the time claims are submitted, they are checked by the system to ensure they conform to established business rules governing reimbursement claim eligibility and approval. The following table identifies the steps related to submitting and processing a claim:

Performed by	Task
Contracting Entity	Complete the Claim for Reimbursement form(s) for the selected claim month. Submit error-free claim to the State for processing.
State	Review and approve claim. Select claim for inclusion in the payment process. Send payment information to the appropriate State agency for payment.

## Claims Menu

Contracting Entities use the Claims Menu to access claim functions, view current claim rates, or view payment summaries.

Item	Description
Claim - SNP	School Nutrition Program Claims
Claim - SSO	Seamless Summer Option Claims
Claim - FFVP	Fresh Fruit and Vegetable Program Claims
Claim Rates	View current claim rates
Payment Summary	Summary of payments made to this Contracting Entity

Figure 28: Claims Menu

## Claim Dates

Various dates are used in the TX-UNPS claims function. The following table identifies and describes the dates used:

Date	Description
<b>Date Created</b>	This date is set to the current system date when the claim is initially created.
<b>Date Modified</b>	This date is set to the current system date when the claim is initially created and each time the claim is saved.
<b>Date Received</b>	This date is typically set to the date the claim was first submitted to the State. The date can be changed by an authorized State user via the Internal Use Only section of the claim form until the claim has been processed for payment. The value of this field is used to validate the 60 day claim rules.
<b>Date Accepted</b>	This date is set to the current system date each time the claim is submitted for payment and contains no errors. If errors are detected during the submit process, the date is not set.  These claims are identified with a status of "Accepted". Accepted claims can be modified until they are included in a payment batch.
<b>Date Processed</b>	This is the date that the claim was added by the State into the batch payment process (via Payment Tracking in the Accounting module). Once the claim has been added to a batch (i.e., "batched"), it cannot be modified.  These claims are identified with a status of "Accepted*" until the batch process has completed. When the batch process is completed, the status of the claim is "Processed".  If a change is required to a claim that has a status of "Accepted*" or "Processed", a revised claim must be entered into the system.

## **Claim Entry**

The Claim Entry function is used to enter, modify, and view claims. The system provides the ability to submit claims at the Contracting Entity or site level. Original and upward adjusted claims cannot be submitted if the received date is more than 60-days since the last day of claim month/year. In order to create a claim in a given month, an approved Application Packet must be in effect for the period.



---

**WARNING:** Only Contracting Entities authorized by the State can submit site-level claims. Please contact the TX-UNPS Help Desk if you are interested in site-level claiming.

---

### **To access Claim Entry**

---

1. On the blue menu bar, select **Claims**. The Claims menu screen displays.
2. From the Claims menu, select the type of claim you would like to enter (e.g., SNP, SSO or FFVP). The Claim Year Summary screen displays.

If a Contracting Entity has already been selected, the Claim Summary screen displays.

If no Contracting Entity has been selected, use the Contracting Entity Search to search for and select a Contracting Entity.

3. Select the Claim Month you would like to submit a claim. The Claim Month Details screen displays.

**Note:** The current school year is the default year if no other school year has been selected. For help selecting a new school year, see ***Selecting a School Year***.

## **Claim Year Summary**

The Claim Year Summary summarizes information regarding the claim for each claim month in the designated year:

- **Adj Number:** identifies the number of revisions associated with the claim. Each revision must be re-processed by the state.
- **Claim Status:** identifies the current status of the claim.
- **Date Received:** identifies the date the system initially received the claim submission. Note: the State has the authority to modify this date.
- **Date Processed:** identifies the date the claim was included in the payment batch process.
- **Earned Amount:** identifies the current value of the claim.

<b>Claim Month</b>	<b>Adj Number</b>	<b>Claim Status</b>	<b>Date Received</b>	<b>Date Processed</b>	<b>Earned Amount</b>
Jul 2010					\$0.00
Aug 2010					\$0.00
Sep 2010	1	Processed	02/02/2011	02/03/2011	\$37,835.58
Oct 2010	0	Processed	02/03/2011	02/03/2011	\$34,291.36
Nov 2010					\$0.00
Dec 2010					\$0.00
Jan 2011					\$0.00
Feb 2011					\$0.00
Mar 2011					\$0.00
Apr 2011					\$0.00
May 2011					\$0.00
Jun 2011					\$0.00
<b>Year to Date Totals</b>					<b>\$72,126.94</b>

**Figure 29: Claim Year Summary screen**

## Claim Month Details

From the Claim Month Details screen, you can access a specific claim form or a summary of the submitted claim.

If the claim has been processed, the options are View (to view the completed claim form) or Summary (to view the calculated payment summary related to the claim).

Claim Month: September 2010						
Claim Items	Adj Number	Date Received	Date Accepted	Date Processed	Earned Amount	Status
<a href="#">View</a>   <a href="#">Summary</a>	0	02/02/2011	02/02/2011	02/02/2011	\$37,843.34	Processed
<a href="#">View</a>   <a href="#">Summary</a>	1	02/02/2011	02/02/2011	02/03/2011	(\$7.76)	Processed
<b>Total Earned</b>					\$37,835.58	

Figure 30: Claim Month Details Screen – Example of Processed Claims

If the claim has not been processed, the options are View (to view the completed claim form), Modify (to enter a new claim or modify an existing claim) or Summary (to view the calculated payment summary related to the claim).

Claim Month: August 2010						
Claim Items	Adj Number	Date Received	Date Accepted	Date Processed	Earned Amount	Status
<a href="#">View</a>   <a href="#">Modify</a>   <a href="#">Summary</a>	0	11/30/2010	01/26/2011		\$109.55	Accepted
<b>Total Earned</b>					\$109.55	

Figure 31: Claim Month Details Screen – Example of Non-Processed Claims

**Note:** Claims can be modified UNTIL they have been added by the State into the batch payment process. Once a claim has been included in a payment batch, the status of the claim is "Accepted\*" until the batch process has completed. When the batch process has completed, the status of the claim is "Processed".

## Claim Site List

If the Contracting Entity has been identified by the State as performing site-level claiming on the Contracting Entity Profile screen, the Contracting Entity would use the Claim Site List screen to select the site whose claim to add, view, or modify.

**Note:** Only active sites will have a link to open the Claim for Reimbursement screen.

Month/Year Claimed	Adjustment Number	Date Received	Date Accepted	Date Processed	Reason Code
Aug 2009	1				

Internal Use Only

Actions	Site #	Site Name	Errors	Status
<a href="#">View</a>   <a href="#">Revise</a>	1032	West Elementary School		Paid
<a href="#">View</a>   <a href="#">Modify</a>	1033	Southwest Elementary		Incomplete

Figure 32: Claim Site List screen

## To add an original claim

Claims can be entered for each eligible month in the school year. Eligible months are determined based on an approved Application Packet and the designated application effective date (identified by the State in the Internal Use Only section of the Contracting Entity and Site applications).

1. From the Claims menu, select the type of claim you would like to enter (e.g., SNP, SSO or FFVP). The Claim Year Summary screen displays.
2. Select the desired Claim Month. The Claim Month Details screen displays.
3. Select **Add Original Claim** button. If the Contracting Entity is performing CE-level claiming, the Claim for Reimbursement screen displays.

If the Contracting Entity is performing site-level claiming, the Claim Site List screen displays. Under Actions, select **Add** to the left of the Site Name you wish to add an original claim. The Claim for Reimbursement screen displays.

Claim Items	Adj Number	Date Received	Date Accepted	Date Processed	Earned Amount	Status
There are no claims for this month.						
Total Earned					\$0.00	

Figure 33: Claim Month Details screen – Add Original Claim

**Note:** The **Add Original Claim** button will only display on Claim Month Details screens that currently have no claims created.

4. Enter claim information for all enrolled programs. Only the programs identified in an approved Application Packet with the appropriate effective date will be available for data entry.
5. Select **Save**. The Claim Month Details screen displays.
6. Review the information.

To make a modification or correction to the claim, select the **<Back** button to return to the Claim for Reimbursement screen

To submit the claim, check the Certification box and select the **Submit for Payment** button.

**Note:** When the **Submit for Payment** button is selected, the system performs additional edit checks (e.g., 60 day rule, etc.). If the system identifies errors, the errors must be corrected before the user can submit the claim for payment.



**WARNING:** An original claim cannot be submitted by a Contracting Entity if the received date is more than 60-days since the last day of claim month/year. For exceptions to this rule, contact the TX-UNPS Help Desk.

## To modify an un-processed claim

Claims can be modified as many times as desired until the claim has been submitted **and** processed by the State for payment distribution.

1. From the Claims menu, select the type of claim you would like to view (e.g., SNP, SSO or FFVP). The Claim Year Summary screen displays.
2. Select the desired Claim Month. The Claim Month Details screen displays.
3. If the Contracting Entity is performing CE-level claiming, select **Modify**. The Claim for Reimbursement screen displays.

If the Contracting Entity is performing site-level claiming, the Claim Site List screen displays. Under Actions, select **Modify** to the left of the Site Name you wish to view. The Claim for Reimbursement screen displays

Claim Month: October 2010						
Claim Items	Adj Number	Date Received	Date Accepted	Date Processed	Earned Amount	Status
<a href="#">View</a>   <a href="#">Modify</a>   <a href="#">Summary</a>	0	01/26/2011			\$1,151.70	Pending
<b>Total Earned</b>					\$1,151.70	

Figure 34: Claim Month Details screen – Modify an Un-processed Claim

**Note:** The Summary link is not active until a claim has been submitted with no errors.

4. Update claim information.
5. Select **Save**. The Claim Month Details screen displays.
6. Review the information.

To make a modification or correction to the claim, select the **<Back** button to return to the Claim for Reimbursement screen

To submit the claim, check the Certification box and select the **Submit for Payment** button.

**Note:** When the **Submit for Payment** button is selected, the system performs additional edit checks (e.g., 60 day rule, etc.). If the system identifies errors, the errors must be corrected before the user can submit the claim for payment.



---

**WARNING:** An original claim cannot be submitted by a Contracting Entity if the received date is more than 60-days since the last day of claim month/year. For exceptions to this rule, contact the TX-UNPS Help Desk.

---

## To revise a processed Contracting Entity-level claim

Claim revision resulting in a downward adjustment may be submitted at any time. Claim revisions resulting in an upward adjustment may be submitted if the date of submission is within 60 days of the last day of the original claim month. Revised claims must be re-processed by the State regardless of their original status.

1. From the Claims menu, select the type of claim you would like to enter (e.g., SNP, SSO or FFVP). The Claim Year Summary screen displays.
2. Select the desired Claim Month. The Claim Month Details screen displays.
3. If the Contracting Entity is performing CE-level claiming, select **Add Revision** button. The Claim for Reimbursement screen displays.

Claim Month: November 2010						
Claim Items	Adj Number	Date Received	Date Accepted	Date Processed	Earned Amount	Status
<a href="#">View</a>   <a href="#">Summary</a>	0	01/19/2011	01/19/2011	01/24/2011	\$12,850.30	Processed
<a href="#">View</a>   <a href="#">Summary</a>	1	02/02/2011	02/02/2011	02/04/2011	\$3,311.70	Processed
<b>Total Earned</b>					\$16,162.00	

[< Back](#) [Add Revision](#)

**Figure 35: Claim Month Details screen – Add Revision**

If the Contracting Entity is performing site-level claiming, the Claim Site List screen displays. Under Actions, select **Revise** to the left of the Site Name whose claim you wish to revise. The Claim for Reimbursement screen displays

**Note:** The **Add Revision** button will only display on Claim Month Details screens that currently have no claims created.

4. Make any necessary changes to the claim.
5. Select **Save**. The Claim Month Details screen displays.
6. Review the information.

To make a modification or correction to the claim, select the **<Back** button to return to the Claim for Reimbursement screen

To submit the revised claim, check the Certification box and select the **Submit for Payment** button.

**Note:** Revised claims must be re-processed by the State regardless of their original status.



**WARNING:** An upward adjusted claim cannot be submitted by a Contracting Entity if the received date is more than 60-days since the last day of claim month/year. For exceptions to this rule, contact the TX-UNPS Help Desk.

---

## To view a claim

1. From the Claims menu, select the type of claim you would like to view (e.g., SNP, SSO or FFVP). The Claim Year Summary screen displays.
2. Select the desired Claim Month. The Claim Month Details screen displays.
3. If the Contracting Entity is performing CE-level claiming, select **View**. The Claim for Reimbursement screen displays.

If the Contracting Entity is performing site-level claiming, the Claim Site List screen displays. Under Actions, select **View** to the left of the Site Name you wish to view. The Claim for Reimbursement screen displays

---

## To view a Claim Summary

The Claim Summary allows you to view a summary of the month's claim in an easy-to-read or print format. No modifications can be made from this page.

1. From the Claims menu, select the type of claim you would like to view (e.g., SNP, SSO or FFVP). The Claim Year Summary screen displays.
2. Select the desired Claim Month. The Claim Month Details screen displays.
3. If the Contracting Entity is performing CE-level claiming, select **Summary**. The Claim for Reimbursement Summary screen displays.

If the Contracting Entity is performing site-level claiming, the Claim Site List screen displays. Under Actions, select **Summary** to the left of the Site Name you wish to view. The Claim for Reimbursement Summary screen displays

Month/Year Claimed	Adjustment Number	Date Received	Date Accepted	Date Processed	Reason Code
Nov 2010	0	01/19/2011	01/19/2011	01/24/2011	Original
<b>Contracting Entity Totals</b>					
Meal Type	Meals/Supplements Served	Federal Rate	Reimbursement Federal Amount		
<b>National School Lunch Program</b>					
Free	2,711	2.7400	7,428.14		
Reduced	620	2.3400	1,450.80		
Paid	1,568	0.2800	439.04		
<b>Total</b>	<b>4,899</b>		<b>9,317.98</b>		
<b>School Breakfast Program Severe Need</b>					
Free	1,710	1.7600	3,009.60		
Reduced	251	1.4600	366.46		
Paid	601	0.2600	156.26		
<b>Total</b>	<b>2,562</b>		<b>3,532.32</b>		
<b>Claim Reimbursement Total</b>			<b>12,850.30</b>		

Figure 36: Claim for Reimbursement Summary screen

## To delete a claim

If the Contracting Entry has entered a claim in error and the claim has not been included in the batch payment process (i.e., the status of the claim is NOT “Accepted\*” or “Processed”), the claim can be deleted.

1. From the Claims menu, select the type of claim you would like to view (e.g., SNP, SSO or FFVP). The Claim Year Summary screen displays.
2. Select the desired Claim Month. The Claim Month Details screen displays.
3. If the Contracting Entity is performing CE-level claiming, select **Modify**. The Claim for Reimbursement screen displays.

If the Contracting Entity is performing site-level claiming, the Claim Site List screen displays. Under Actions, select **Modify** to the left of the Site Name you wish to view.

The Claim for Reimbursement screen displays

4. Select **Delete** in the Edit menu in the upper-right corner.
5. The system transfers you to the bottom of the screen and a warning message is displayed.
6. Select the **Delete** button at the bottom of the page. A confirmation message displays.
7. Select **Finish**.



**WARNING:** Once the claim has been deleted, it is permanently removed from the application and cannot be restored. Use caution before deleting a claim.

## Claim Rates

The system provides a screen to view claim for reimbursement rates by year. The rates displayed apply for the rate year defined at the top of the page. Meals are reimbursed based on the designated rate established by the USDA. Annually, the reimbursement rates are entered by authorized TDA staff through the Claim Rate Maintenance screens in the Maintenance and Configuration module.

### To access Claim Rates

---

1. From the Claims menu, select **Claim Rates**. The Claim Rates screen displays.
2. Use the **<Back** button to return to the Claims menu.

Claim Rates for SNP				
Rate Year: July 1, 2010 to June 30, 2011				
Federal Reimbursement Rates				
<b>National School Lunch Program</b>			<b>School Breakfast Program</b>	
	60% or More	Less Than 60%	Severe Need	Non-Severe Need
Free	2.7400	2.7200	1.7600	1.4800
Reduced	2.3400	2.3200	1.4600	1.1800
Paid	0.2800	0.2600	0.2600	0.2600
<b>After School Meal Supplements</b>			<b>Special Milk Program</b>	
	Area Eligible	Regular	Paid	
Free	0.7400	0.7400	0.1775	
Reduced	N/A	0.3700		
Paid	N/A	0.0600		

Figure 37: Claim Rates for SNP screen



**TIP:** The Claim Rates screen defaults to the designated school year identified at the top right of the screen. To view the claim rates for a previous year, see [Selecting a School Year](#).

## **Payment Summary**

The Payment Summary screen provides a list of all payment batch schedules processed for the Contracting Entity for the selected school year. Each schedule number and process date represents payments that have been scheduled. Payments from payment batches are grouped by program and sorted by date.

### **To access Payment Summary**

---

1. From the Claims menu, select **Payment Summary**. The Payment Summary List screen displays.
2. Use the **<Back** button to return to the Claims menu.

<b>Schedule Number</b>	<b>Processed Date</b>	<b>Warrant Issue Date</b>	<b>Earned Amount</b>	<b>Adjustments</b>	<b>Distribution Amount</b>
11020401	02/04/2011		\$ 3,311.70	\$ 0.00	\$ 3,311.70
11012402	01/24/2011		\$ 12,850.30	\$ 0.00	\$ 12,850.30

**Figure 38: Payment Summary List screen**

### **To view a Payment Summary**

---

1. From the Claims menu, select **Payment Summary**. The Payment Summary List screen displays.
2. Select the payment record you wish to view. The payment summary information displays for all payments included in the payment batch.
3. Select the **<Back** button to return to the previous screen.

Schedule Number	Schedule Process Date	Federal Year	Fund Authority
11020401	02/04/2011	2010-2011	USDA - Federal Funds

Account Description	Month	Transaction Description	Amount
School Lunch			
	Mar 2010	Original Claim	\$ 104.20
	Mar 2010	Distribution for Claim #1276	\$ 104.20
	Nov 2010	Claim Revision Increase	\$ 1,194.02
	Nov 2010	Distribution for Claim #1249	\$ 1,194.02
School Breakfast			
	Mar 2010	Original Claim	\$ 68.80
	Mar 2010	Distribution for Claim #1276	\$ 68.80
	Nov 2010	Claim Revision Increase	\$ 2,117.68
	Nov 2010	Distribution for Claim #1249	\$ 2,117.68

Payment Schedule Summary			
	Mar 2010	School Lunch	\$ 104.20
	Nov 2010	School Lunch	\$ 1,194.02
	Mar 2010	School Breakfast	\$ 68.80
	Nov 2010	School Breakfast	\$ 2,117.68
<b>Total Payments</b>			<b>\$ 3,484.70</b>

Figure 39: Payment Summary screen

# Security

System-authenticated users (i.e., users that are logged on) may change their password through the Change Password feature.

## Security menu

The Security menu option within the School Nutrition Programs module is the access point to the Change Password and User Manager functions.

### To access the Security menu

1. Select **Security** on the blue menu bar at the top of the page. The Security menu displays.
2. Select a security item to access that security function.

### To access Change Password

1. On the blue menu bar, select **Security**.
2. On the Security menu, select **Change Password**. The Change Password screen displays.
3. Enter your **New Password**.
4. Re-Enter your New Password.
5. Select **Save**. A confirmation message displays.
6. Select **<Edit** to return to the Change Password screen you just modified.  
-OR-  
Select **Finish** to return to the Security menu.

**Change Password**

Please enter your new password, then re-enter your new password to verify it. Select Save to continue.

New Password:

Re-Enter New Password:

Figure 40: Change Password screen

**Note:** Security configuration settings require a password ten (10) to twelve (12) characters in length. Please note that the password must be at least ten (10) characters in length. The password must contain at least one number, one letter, and one special character (e.g., !, ?, /). Passwords are case sensitive.

# 6

## ***Application Packet Process***

*This section of the manual provides information on how the State can review and approve Application Packets through TX-UNPS.*

**Note:** For security purposes, users can only view Contracting Entities to whom they are associated.

### ***Submitting an Application Packet***

All new enrollment or renewal enrollment applications are initially created with a status of “Pending Validation”. Once the Application has been saved, the system validates the business rules and the application’s status is set by the system to either “Error” (if any errors exist) or “Not Submitted” (no errors, but the Application Packet has not been submitted).

Only complete Application Packets that have no errors can be submitted to the State. To submit a completed Application Packet, the Contracting Entity would select the **Submit for Approval** button. This simulates sending a completed Application Packet in the mail. Application items are placed in a view-only mode for the Contracting Entity.

An Application Packet can be submitted to the State (i.e., the **Submit for Approval** button is enabled) only if the following conditions have been met:

- The Contracting Entity Application must contain no errors.
- At least one Site Application must exist and contain no errors.
- If the Contracting Entity is using a Food Service Management Company (FSMC), at least one contract must exist and contain no errors.
- All items in the Checklist must be submitted (submitted checkbox checked and date submitted is entered).
- The Contracting Entity is not closed.

Once the Contracting Entity has submitted the Application Packet, the State will review each item in the submitted Application Packet. The State may approve each application item, deny an application item, or return the application item and its respective Application Packet back to the Contracting Entity for correction.

If the Application Packet is denied or returned to the Contracting Entity for correction, the State will provide comments within the respective Application Packet item as to why the application was denied or what needs to be corrected in order to re-submit the Application Packet.

## ***Application Packet Statuses***

Statuses are used to manage the workflow of the Application Packet. Each packet can have only one status at a time.

- Not Submitted
  - The packet has a status of “Not Submitted” when the packet is created for the first time or when any of the packet items are created, revised, or modified, but the Application Packet has not been submitted to the State.
- Submitted
  - The packet has a status of “Submitted” when the Contracting Entity uses the **Submit for Approval** button on the Application Packet screen to submit the error-free packet to the State for review.
  - If the packet status is “Submitted”, the entire packet becomes read-only to the Contracting Entity.
  - All applications that are “Submitted” must ultimately be “Approved”, “Denied”, or “Returned for Correction” or “Withdrawn”.
- Approval Recommended (i.e., First Level Approved)
  - When a Contracting Entity is new to the program, the system will require two levels of approval. This status represents the first level of approval performed by the State before a final approval is granted.
  - The Application Packet screen will display the **First Approval** button when the first level approval is required. After the button has been selected, this button will not display; however, the **Approve** button will be displayed.
- Approved
  - The packet has a status of “Approved” when the State has approved each packet item AND has selected the **Approve** button on the Application Packet screen.
- Denied
  - The packet has a status of “Denied” when the State selects the **Deny** button on the Application Packet screen.
  - When a packet is “Denied”, the packet remains view-only and nothing in the packet can be modified. The only way to edit items in a denied packet is for the State to change the status of the packet to something other than “Denied”.
  - By denying an Application Packet, the status of all items within the packet is automatically set to “Denied”.
  - An “Approved” packet cannot be “Denied”.
- Returned for Corrections
  - The packet has a status of “Returned for Corrections” when the State selects the **Return** button on the Application Packet screen.

- This status unlocks the packet for the Contracting Entity and sets the status back to “Not Submitted”.
- An “Approved” packet cannot be “Returned for Corrections”.
- Withdrawn
  - The packet has a status of “Withdrawn” when the Contracting Entity or State selects the **Withdraw** button on the Application Packet screen.
  - An Application Packet with a status of “First Level Approved” can be withdrawn.
  - An Application Packet with a status of “Approved” packet cannot be “Withdrawn”. If an application has been “Approved”, it can only be “Cancelled” or “Terminated” by the State (see *Application Packet* section).

## ***Application Statuses***

Statuses are used to define the current state of an application packet item. Each application can have only one status at a time.

- Pending Validation
  - The application has a status of “Pending Validation” when the application has not yet been opened or saved.
- Error
  - The application has a status of “Error” if it has failed system validation rules. Data entered is maintained.
- Not Submitted
  - The application has a status of “Not Submitted” when the application is saved without error, but the Application Packet has not been submitted to the State.
- Submitted
  - The application has a status of “Submitted” when the Contracting Entity has submitted the Application Packet to the State for review (i.e., the Contracting Entity has selected the **Submit for Approval** button).
  - Any application that is marked “Not Submitted” is changed to “Submitted”
  - The Application Packet becomes read-only to Contracting Entity users.
- Approved
  - The application has a status of “Approved” when the State has approved the application (i.e., the State selected “Approved” in the Internal Use Only section of the form).
- Denied
  - The application has a status of “Denied” when the State has denied the application (i.e., the State selected “Denied” in the Internal Use Only section of the form).
  - If the application is “Denied”, it can no longer be modified by the Contracting Entity. Only the State can change the status of the application.
  - When setting the application status to “Denied”, the State should enter a comment in the Comments to Contracting Entity field explaining the reason the application was denied.
- Returned for Correction
  - The application has a status of “Returned for Correction” when the State has identified errors in the application and has selected “Returned for Correction” in the Internal Use Only section of the form.
  - When setting the application status to “Returned for Correction”, the State should enter a comment in the Comments to Contracting Entity field explaining the reason the application was returned.

- Withdrawn
  - The application has a status of “Withdrawn” when the State has selected “Withdrawn” in the Internal Use Only section of the form.
  - If the Application Packet has ever been approved, there will not be an option to withdraw.

## ***Claim Statuses***

Statuses are used to define the current state of a claim. Each claim can have only one status at a time.

- Not Eligible
  - The claim has a status of “Not Eligible” when there is an application condition that is preventing claiming for the selected month (e.g., Contracting Entity or site is not authorized on the Application Packet to operate for the selected month or the Application Packet status is not “Approved”).
- Incomplete
  - The claim has a status of “Incomplete” when the claim has been created in the system but the **Save** button was never clicked (e.g., timeout, logout, etc.). The system saves the data that has been entered, but no edits have been performed.
- Error
  - The claim has a status of “Error” when the claim has been submitted and has business rule violations.
- Pending
  - The claim has a status of “Pending” when the claim has been saved and on-line edits have been performed, but the claim has not been submitted and validated with additional edits (e.g., 60 days edit, etc.).
  - Applicable only when the Contracting Entity is participating in CE-level claiming.
- Validated
  - This site claim has a status of “Validated” when the site claim has been entered, validated, and contains no errors.
  - Applicable only when the Contracting Entity is participating in site-level claiming.
- Accepted
  - The claim has a status of “Accepted” when the claim has passed all on-line edits and additional edits (e.g., 60 days edit, etc.), and is ready to be included in the payment tracking process.
  - The claim can still be modified. A revision is not necessary until the claim is included by the State in a batch payment process.
- Accepted\*
  - The claim has a status of “Accepted\*” when the claim has been selected by the State for inclusion in the batch payment process; however, the batch process has not run.
  - The claim cannot be modified. If the claim requires a change, a revised claim must be submitted.
- Processed
  - Claim has been fully processed by TDA and has been sent to the State’s Accounting Office for disbursement of funds.